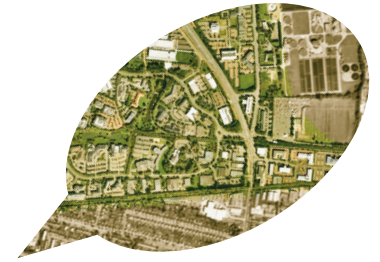


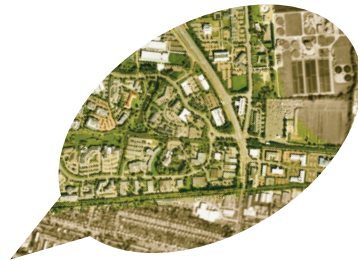
faith that works  
**PARKS**at**ONE**

Cambridge Science, Innovation & Business Parks  
[info@parksatone.org.uk](mailto:info@parksatone.org.uk) ✨ [www.parksatone.org.uk](http://www.parksatone.org.uk)



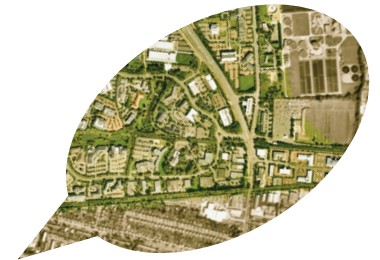
faith that works  
**PARKS**at**ONE**

Cambridge Science, Innovation & Business Parks  
[info@parksatone.org.uk](mailto:info@parksatone.org.uk) ✨ [www.parksatone.org.uk](http://www.parksatone.org.uk)



faith that works  
**PARKS**at**ONE**

Cambridge Science, Innovation & Business Parks  
[info@parksatone.org.uk](mailto:info@parksatone.org.uk) ✨ [www.parksatone.org.uk](http://www.parksatone.org.uk)



faith that works  
**PARKS**at**ONE**

Cambridge Science, Innovation & Business Parks  
[info@parksatone.org.uk](mailto:info@parksatone.org.uk) ✨ [www.parksatone.org.uk](http://www.parksatone.org.uk)

- \* **Monthly lunchtime talks** connecting the Christian faith with the everyday lives of those who work on the Cambridge Science, Innovation and Business Parks.
- \* **1-1.35pm.**
- \* **Meeting in the Trinity Centre on the Science Park** – you can buy sandwiches & drinks at the venue. Details and directions at [www.parksatone.org.uk](http://www.parksatone.org.uk)
- \* **All welcome** – these talks are open to everyone, whatever their current understanding of the Christian faith.

**Wednesday 21st February**  
*Faith in the start-up world*  
**Martin Frost**

**Tuesday 13th March**  
*Human identity – can I choose who I am?*  
**Andrew Walker**

**Wednesday 25th April**  
*Can a scientist believe in miracles?*  
**Prof Sir Colin Humphreys**

**Tuesday 15th May**  
*The flood in light of geological findings*  
**Prof Bob White**

**Wednesday 13th June**  
*The black dog and the Good Shepherd*  
**Martin Brooke**

**Tuesday 10th July**  
*Good enough for God?*  
**David Todd**

- \* **Monthly lunchtime talks** connecting the Christian faith with the everyday lives of those who work on the Cambridge Science, Innovation and Business Parks.
- \* **1-1.35pm.**
- \* **Meeting in the Trinity Centre on the Science Park** – you can buy sandwiches & drinks at the venue. Details and directions at [www.parksatone.org.uk](http://www.parksatone.org.uk)
- \* **All welcome** – these talks are open to everyone, whatever their current understanding of the Christian faith.

**Wednesday 21st February**  
*Faith in the start-up world*  
**Martin Frost**

**Tuesday 13th March**  
*Human identity – can I choose who I am?*  
**Andrew Walker**

**Wednesday 25th April**  
*Can a scientist believe in miracles?*  
**Prof Sir Colin Humphreys**

**Tuesday 15th May**  
*The flood in light of geological findings*  
**Prof Bob White**

**Wednesday 13th June**  
*The black dog and the Good Shepherd*  
**Martin Brooke**

**Tuesday 10th July**  
*Good enough for God?*  
**David Todd**

- \* **Monthly lunchtime talks** connecting the Christian faith with the everyday lives of those who work on the Cambridge Science, Innovation and Business Parks.
- \* **1-1.35pm.**
- \* **Meeting in the Trinity Centre on the Science Park** – you can buy sandwiches & drinks at the venue. Details and directions at [www.parksatone.org.uk](http://www.parksatone.org.uk)
- \* **All welcome** – these talks are open to everyone, whatever their current understanding of the Christian faith.

**Wednesday 21st February**  
*Faith in the start-up world*  
**Martin Frost**

**Tuesday 13th March**  
*Human identity – can I choose who I am?*  
**Andrew Walker**

**Wednesday 25th April**  
*Can a scientist believe in miracles?*  
**Prof Sir Colin Humphreys**

**Tuesday 15th May**  
*The flood in light of geological findings*  
**Prof Bob White**

**Wednesday 13th June**  
*The black dog and the Good Shepherd*  
**Martin Brooke**

**Tuesday 10th July**  
*Good enough for God?*  
**David Todd**

- \* **Monthly lunchtime talks** connecting the Christian faith with the everyday lives of those who work on the Cambridge Science, Innovation and Business Parks.
- \* **1-1.35pm.**
- \* **Meeting in the Trinity Centre on the Science Park** – you can buy sandwiches & drinks at the venue. Details and directions at [www.parksatone.org.uk](http://www.parksatone.org.uk)
- \* **All welcome** – these talks are open to everyone, whatever their current understanding of the Christian faith.

**Wednesday 21st February**  
*Faith in the start-up world*  
**Martin Frost**

**Tuesday 13th March**  
*Human identity – can I choose who I am?*  
**Andrew Walker**

**Wednesday 25th April**  
*Can a scientist believe in miracles?*  
**Prof Sir Colin Humphreys**

**Tuesday 15th May**  
*The flood in light of geological findings*  
**Prof Bob White**

**Wednesday 13th June**  
*The black dog and the Good Shepherd*  
**Martin Brooke**

**Tuesday 10th July**  
*Good enough for God?*  
**David Todd**